



- Economical and Easy to Install
- Cut and Abrasion Resistant
- Expands up to 150%
- Halogen Free
- Resists Gasoline, Engine Chemicals, & Cleaning Solvents
- FMVSS 302 Approved

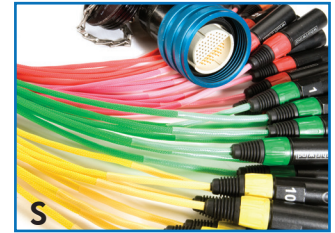
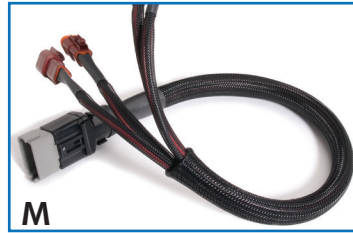
## A Versatile Bundling & Protection Solution

The FLEXO PET (PTN) grade is used in electronics, automotive, marine, and industrial wire harnessing applications where cost efficiency and durability are critical. The unique braided construction and wide expandability allows quick and easy installation over large connectors and long runs. PTN can be found in applications ranging from small office/home office to high tech wire and cable harnesses. The wide range of available colors and sizes allows easy and systematic color coding in complex wiring and cabling installations. PTN is braided from 10 mil polyethylene terephthalate (PET) monofilament yarns.

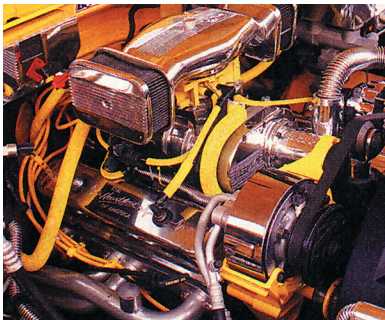
### The Widest Range of Sizes in The Industry



When cut with a hot knife, the sealed ends of Flexo PET allow for varied termination solutions.



Flexo PET installs quickly in production harnessing environments, reducing assembly cost.



High thermal and chemical resistance and wide color/size selection make Flexo PET ideal for customizing and protecting the wires, hoses, and cables in custom and classic cars.

| Nominal Size              | Part #    | Expansion Range |        | Standard Spool Put-Ups |            | Available Colors                         | Lbs/100'       |      |
|---------------------------|-----------|-----------------|--------|------------------------|------------|--|----------------|------|
|                           |           | Min.            | Max.   | Bulk Spool             | Shop Spool |  |                |      |
| 1/16"                     | PTN0.06   | 3/64"           | 3/32"  | 1,000'                 | 250'       | more than 40<br>(check for availability) | 0.22           |      |
| 1/8"                      | PTN0.13   | 3/32"           | 1/4"   | 1,000'                 | 225'       |  | 0.20           |      |
| 1/4"                      | PTN0.25   | 1/8"            | 7/16"  | 1,000'                 | 200'       |  | 0.30           |      |
| 5/16"                     | PTN0.31   | 5/32"           | 15/32" | 500'                   | 150'       |  | 0.50           |      |
| 3/8"                      | PTN0.38   | 3/16"           | 1/2"   | 500'                   | 125'       |  | 0.57           |      |
| 7/16"                     | PTN0.44   | 7/32"           | 5/8"   | 500'                   | 125'       |  | 0.68           |      |
| 1/2"                      | PTN0.50   | 1/4"            | 3/4"   | 500'                   | 100'       |  | 0.77           |      |
| 9/16"                     | PTN0.56   | 5/16"           | 7/8"   | 500'                   | 100'       |  | 0.81           |      |
| 5/8"                      | PTN0.63   | 3/8"            | 1"     | 500'                   | 100'       |  | 0.95           |      |
| 3/4"                      | PTN0.75   | 1/2"            | 1 1/4" | 250'                   | 75'        |  | 1.20           |      |
| 1"                        | PTN1.00   | 5/8"            | 1 5/8" | 250'                   | 65'        |  | 1.34           |      |
| 1 1/4"                    | PTN1.25   | 3/4"            | 1 3/4" | 250'                   | 50'        |  | 1.60           |      |
| 1 1/2"                    | PTN1.50   | 1"              | 2 1/8" | 200'                   | 40'        |  | 1.96           |      |
| 1 3/4"                    | PTN1.75   | 1 1/4"          | 2 3/4" | 200'                   | 30'        |  | 2.45           |      |
| 2"                        | PTN2.00   | 1 1/2"          | 3 1/2" | 200'                   | 50'        |  | 2.60           |      |
| 2 1/2"                    | PTN2.50   | 1 3/4"          | 3 5/8" | 200'                   | 50'        |  | 3.80           |      |
| 3"                        | PTN3.00   | 2 1/2"          | 4 3/4" | 100'                   | 50'        |  | 3.80           |      |
| <b>3 End Construction</b> |           |                 |        |                        |            |  |                |      |
| 1/4"                      | PT30.25   | 1/8"            | 3/8"   | 1,000'                 | 200'       |  | BK, CL,NB & RE | 0.39 |
| <b>9 Mil Construction</b> |           |                 |        |                        |            |  |                |      |
| 4"                        | PT94.00BK | 4"              | 6 1/2" | 100'                   | 50'        | Black (BK)                               | 3.80           |      |
| <b>PET Lean</b>           |           |                 |        |                        |            |  |                |      |
| 3/4"                      | PTL0.75BK | 1/2"            | 1 1/4" | 250'                   | 75'        | Black (BK)                               | 1.04           |      |
| 1 1/4"                    | PTL1.25BK | 3/4"            | 1 3/4" | 250'                   | 50'        | Black (BK)                               | 1.19           |      |



# The Widest Range Of Colors In The Industry

Techflex offers Flexo PET in the widest range of standard colors in the industry, including UV reactive and multicolor spirals. Additionally, we can manufacture Flexo PET in custom solid or spiral combinations.



|    |             |    |               |    |                |    |               |
|----|-------------|----|---------------|----|----------------|----|---------------|
| CL | Clear       | WH | White         | PT | Patriot        | DS | Desert        |
| RD | Red         | NP | *Neon Pink    | SH | Super Hero     | MO | Monochrome    |
| OR | Orange      | NR | *Neon Red     | JS | Jester         | GW | Gray White    |
| YL | Yellow      | NY | *Neon Yellow  | OG | Ogre           | RS | Red Spiral    |
| GN | Green       | NG | *Neon Green   | NX | Nitrox         | SM | Shimmer       |
| BL | Blue        | NB | *Neon Blue    | GD | Ground Wire    | RC | Rainbow Clear |
| DP | Dark Purple | PP | Purple        | SS | Safety Stripe  | RE | Reggae        |
| BR | Brown       | BE | Beige         | SK | Snake          | RB | Rainbow Black |
| GY | Gray        | PG | Platinum Gray | CF | Checkered Flag | FG | Forest Green  |
| BK | Black       | AQ | Aqua          | CB | Carbon         | BM | Black Magic   |

**\*UV Reactive**

Also contact an account representative for relevant details regarding custom orders. See the web for the complete list of colors.